

**nashuatec**

TOTAL DOCUMENT SOLUTIONS



**A080**



**THE ULTIMATE WIDE FORMAT  
SOLUTION FOR SECURE  
ENVIRONMENTS**

**Aficio™**

## Outstanding wide format multifunctionality in a secure, scalable system

Do you want a more productive, wide format digital system capable of handling specialized and customized documents? Then Nashuatec's fast and efficient A080 wide format solution, with built-in intelligent security, is the perfect choice. This scalable system gives you the freedom to combine your choice of high-quality print, copy and scan functions into one, space-saving device. Its adaptable security features will integrate seamlessly with your existing network, to safeguard the integrity and accessibility of your confidential information.

Enhanced image conversion and digital scanning options enable the Nashuatec A080 to become your wide format hub, streamlining your workflow and effortlessly capturing and distributing your documents. Plus, there's a built-in server for storage and easy reproduction of frequently used documents. Now you can significantly improve the quality, productivity and operational simplicity of your high-volume, wide format facilities.



*Nashuatec's unique approach, links people with knowledge and expertise, combining our wide experience of innovative, document related Products and Software Solutions with our world class Business and Professional Services to deliver the best Total Document Solutions for your business.*

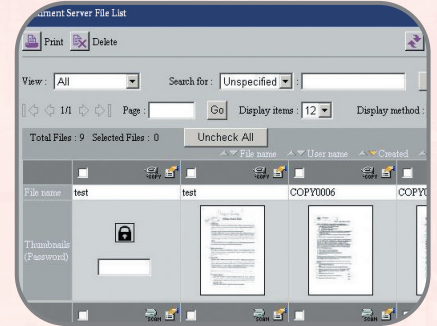
Modular design with small footprint, saves workspace and reduces costs



Intelligent security features provide the highest level of document confidentiality



Manage and print documents stored on the Document Server easily with Web Image Monitor



#### Modular design saves space, reduces costs

The Nashuatec A080's space-saving, scalable design allows businesses to incorporate print, copy and scan options into a single device to exactly suit their business needs.

This combined with a very competitive cost per page, contributes to a lower Total Cost of Ownership.

#### Outstanding quality and performance

The A080 effortlessly prints the most complex wide format projects on a variety of media from sizes A4 up to 914mm width. It produces high-quality true 600dpi output at an impressive 8 pages per minute (ppm).

#### High security enhances confidentiality

Intelligent security features and robust authentication methods allow seamless integration with your network environment, ensuring confidentiality to the highest recognized industry standard. Advanced encryption protects address books and documents from unauthorized access, whilst the optional Data Overwrite Security (DOS) Kit overwrites temporary data, providing essential hard disk security.

#### Improve productivity and streamline workflow

The A080's GW Scanner option provides powerful Network TWAIN image capture and adjustment at true 1,200dpi resolution allowing documents to be viewed at their original quality. Built-in Scan-to-Email and Scan-to-Folder utilities save time and reduce costs by

integrating with LDAP to quickly identify users and provide streamlined methods of distributing, storing and archiving wide format documents. The enhanced RATIO software options bypass image editing issues, allowing them to be instantly printed or imported to DTP/CAD applications as vectors, enabling a more efficient document workflow.

#### Seamless integration with your network

With a Network Interface Card as standard and simple Ethernet connectivity, the A080 allows printing from virtually any platform in any environment.

#### Simplify document management with user-friendly software and Document Server

Web Image Monitor comes pre-installed on the A080 and is accessed through a standard web browser interface. As a result, Network Administrators save valuable time by managing the A080 directly from their PC, from setting user names to configuring each function. At the same time, users can view, download and re-print documents stored within the document server, or simply check the status of paper trays or toner levels in the machine, increasing efficiency and productivity. The DeskTopBinder software allows you to easily manage, view and reproduce documents stored on your network. It offers you one integrated portal to manage documents from different sources and locations, thereby increasing the efficiency and productivity of your document communications.

#### Outstanding Software and Services

Complementing the A080, Nashuatec offers a superb range of Software Solutions and Services, which are designed to add value and ensure that our devices continue to operate seamlessly and reliably. Covering all aspects of your business, including document management, network control, consultancy, training and unrivalled support, these innovative products and services offer a tailor made solution to improve productivity, workflow efficiency and cost control throughout your organization.

**Aficio™**

*The Nashuatec A080 bears the Aficio Symbol – your sign of digital technology, innovation and customer support in action.*

## Copier

### Copying process

Electro photographic printing

### Copy speed

6 metres per minute  
4.5 copies per minute [A0]  
8 copies per minute [A1]

### Resolution

600dpi

### Multiple copy

Up to 99 (ten key input)

### Warm up time

Less than 130 seconds

### First output speed

18 seconds [A1]  
25 seconds [A0]

### Reduction/enlargement

4R/4E

### Zoom

25 - 400% (in 0.1% steps)

### Memory

1GB

### Hard disk drive

Standard: 80GB (2 x 40GB)

### Paper input capacity

Standard: 1 roll feeder (2 rolls)  
Bypass tray

### Paper output capacity

Front: 99 sheets A1 (plain paper)  
Rear: 10 sheets A0/A1 (plain paper)

### Paper size

Minimum: 210 x 210mm  
Maximum: 914 x 15,000mm

### Paper weight

Original: 20.9 - 157g/m<sup>2</sup>  
Output: 52.3 - 110g/m<sup>2</sup> for roll paper  
64.0 - 110g/m<sup>2</sup> for cassette tray

### Dimensions (W x D x H)

1,250 x 748 x 1,200mm

### Weight

230kg

### Power source

220 - 240V, 50/60Hz

### Power consumption

Less than 1.5kW

## Scanner (option)

### Scan speed

Maximum 8 originals per minute [A1]

### Original size

Maximum 914 x 15,000mm

### Scan-to-email

SMT, TCP/IP

### Resolution

150/200/300/400/600dpi

### Destination addresses

Maximum 500 per job

### Stored destination addresses

Maximum 2,000

### Address book

Via LDAP or locally on hard disk drive

### Output formats

PDF/TIFF

### Scan-to-folder

SMB or FTP protocol (with login security)

### Destination

Maximum 50 folders per job

### Bundled drivers

Network TWAIN

## Printer (option)

### Controller type

External (server type)

### Print speed

6 metres per minute  
4.5 prints per minute [A0]  
8 prints per minute [A1]

### Print resolution

600dpi

### Print size

Minimum: 210 x 210mm  
Maximum: 914 x 15,000mm

### Network protocol

TCP/IP, IPX/SPX, lpr/lpq, HTML, SMB, EtherTalk

### Supported file formats

Standard: HPGL, HPGL2, Calcomp  
906/907, TIFF CALS (1 & 2),  
BMP, RLC, PCX, T6X, CIT,  
HP/RTL, WMF  
Option: PDF (Adobe® PostScript® 3™)  
CGM, DWG, DXF, DWF

### Supported client environments

Windows® 95/98/Me/NT4.0/2000/XP  
UNIX Sun® Solaris 2.6/7/8, HP-UX  
10.x/11.x  
SCO OpenServer 5.x (up to 5.0.6)  
RedHat® Linux 6.x/7.1  
Macintosh 8.6 - 9.2.x (OS X Classic)  
Macintosh X v10.1 - 10.3 (native mode)

### Recommended PC

Please contact your supplier for the latest recommended server PC specification list

## Scanner (option for Printer)

### Scan speed

Maximum 8 originals per minute [A1]

### Resolution

150 - 1,200dpi user selectable

### Original size

Maximum 914 x 15,000mm

### Output formats

PDF/TIFF/T6X/BMP/RLC/HP-RTL/PCX/CALS  
1 & 2/DWF

## Software/Drivers

RW-480 PLOTBASE  
RW-480 PLOTCLIENT/WIN  
RW-480 WINPRINT  
RW-480 PLOTCLIENT HDI/ADI  
RW-480 PLOTCLIENT/WEB  
RW-480 PLOTCLIENT MAC  
RW-480 SCANTOOL  
RW-480 PS3  
RW-480 CGM  
Also available: Bentley® driver for MicroStation

## Options

- 2<sup>nd</sup> roll feeder unit (2 rolls)
- A2 paper tray unit (2 trays)
- Roll holder
- Original tray
- FireWire (IEEE1394)
- Wireless LAN (IEEE802.11b)
- Data Overwrite Security Unit

Company management systems applied during the manufacturing of all Nashuatec products conform to ISO9001 quality and ISO14001 environmental management standards.

As an ENERGY STAR program participant, Nashuatec has determined that this product meets the ENERGY STAR guidelines for energy efficiency.

We reserve the right to make amendments to the technical specifications and external appearance of this equipment. Please note that the full range of options shown in this publication may not always be available. All brand and product names are recognized and hereby acknowledged, as registered trademarks of their respective owners.



MA08000004680

# nashuatec

Part of the NRG group

www.nashuatec.com

